



**AS INDIVIDUAL  
AS YOUR EMPLOYEES**

Workplace systems





## **MiniTec** Facts & Figures

### **THE ART OF SIMPLICITY**

**MiniTec** has continuously developed from a specialist for miniature guides to a leading technology company and special equipment manufacturer


Today 400 experts at 11 locations in Germany, France, USA, United Kingdom, Spain, Slovenia and China develop tailor-made solutions for our customers. At the same time, more than 60 partners worldwide ensure reliable service and competent technical support.


Our solutions are just as individual as our customers' requirements. As a full-service manufacturer, we use our design system to implement intelligent systems and special machines for a wide variety of tasks in all important industrial sectors: from automotive, chemicals and electrical engineering to energy supply, aerospace, mechanical engineering, the metal and pharmaceutical industries.

 **1986**  
*founded*

 **420**  
*Employees*  
280 in Germany

 **60**  
*Sales and service partners*  
around the world

 **Business award**  
„Innovativer Mittelstand“  
**Award**  
„Attraktiver Arbeitgeber  
Rheinland-Pfalz“  
**Honorary award**  
of the region Westpfalz

 **11**  
**Locations**  
Germany, France, United Kingdom, Slovenia, Spain, USA, China



## WORKPLACE SYSTEMS FROM THE CONSTRUCTION KIT ERGONOMICAL AND INDIVIDUAL

**MiniTec** offers you ergonomically optimised standard workplace systems with which you can either fall back on firmly defined preferred sizes or determine the dimensions yourself. Whether with or without height adjustment, with or without portal structure - our workstations can be individually configured with the help of the comprehensive range of accessories, because they are based on the flexible and robust MiniTec profile modular system.



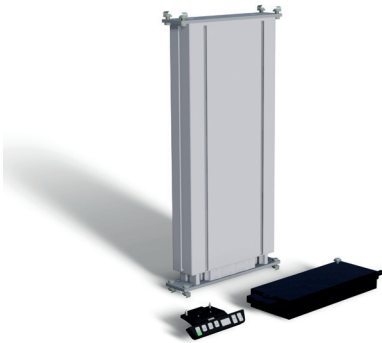
Workstations  
without portal construction



Workstations  
with portal construction



Electrically & hydraulically  
height-adjustable tables



Lifting columns



Table tops



Under counter cabinets



Lighting



Kanban



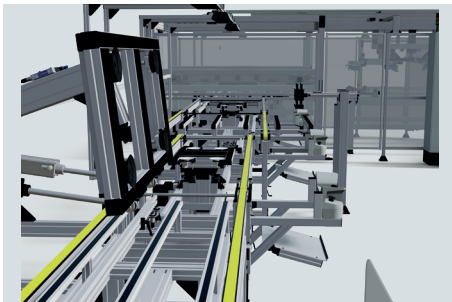
Box lifting devices

## FROM A SIMPLE WORKPLACE TO COMPLEX ASSEMBLY LINES

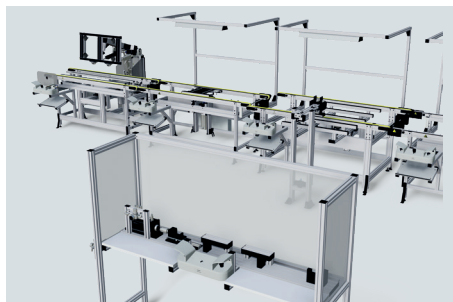
The trend in the markets is towards individualisation of products. Manufacturers must react flexibly and economically and meet the high quality demands of their customers. Our assembly and test lines are of modular design and convince with their effective electronic assembly support. Our workstations are well thought-out down to the last detail and enable a very short training period - and ensure a consistently high quality.



Due to the modular design of our system components, it is not only possible to create highly flexible manual workstations for single-part production with many variants: thanks to the numerous connection possibilities and our know-how in the field of integrated assembly solutions, our linear and conveyor technology and automation enable us to design and implement highly complex and automated assembly lines economically..



Backend assembly line for photovoltaic modules with frame joining device



- Worker assistance systems
- „Industry 4.0“ applications
- Kanban systems
- Material handling
- One-Piece-Flow assembly lines
- Automated assembly lines and testing devices



Order picking workstation system with Scan2Light operator guidance



Height adjustable ESD mounting island



Height adjustable Re-welding workstation



## **WE GLADLY ACCEPT YOUR CHALLENGE FROM DESIGNING TO IMPLEMENTATION**

Whether simple workstation or complex assembly line: MiniTec offers you full service. From consulting and project planning with our own software development to on-site installation.

Our service teams provide fast remote maintenance and regular software updates for trouble-free operation. And if a repair, training or extension is necessary, our experts are also on site in the shortest time.

### **CUSTOMER SERVICE ON-SITE**

14 consulting offices in Germany alone support our customers in problem analysis and develop initial solutions. Our partners worldwide have access to more than 60 bases. quatum quae nobit dia soluptas.

### **DESIGNING AND ASSEMBLY**

More than 30 experienced engineers are constantly developing and testing new components for the MiniTec-profile system at the company's headquarters. On the basis of this system, we develop tailor-made solutions for a wide variety of applications after intensive consultation with our customers. The Ergonomics team develops, for example, comprehensive production solutions with workstations, Kanban production control, pick-to-light picking and electronic operator guidance. All necessary competences from mechanical design to electrical planning, switch cabinet construction, programming, data processing, assembly and installation on site including remote maintenance are available in-house. Our customers benefit from our comprehensive expertise and

experience through numerous developments for a wide variety of industries and challenges.

### **SOFTWARE**

Our CAD tool iCAD Assembler is the logical addition to the hardware of our construction kit. Only the combination of hardware and software opens up the full potential for efficient mechanical engineering.

- System independent 3D design tool
- Electronic catalogue
- Direct interfaces to all common CAD systems
- Automatic parts list
- Integrated plausibility check
- Automatic machining drawings
- Configurators for workstations, linear axes, conveyor belts, roller conveyors, protective devices

### **USER TRAINING**

We offer our customers free training courses on individually arranged dates in our company. You will receive valuable tips and tricks to benefit even faster from the advantages of our modular profile system. Among the topics of our free training courses are:

- Selection of profiles and components
- Connection technology without drilling and thread tapping
- The MiniTec linear system: application and combination options
- Workplace design and conveyor technology
- Practical advice on problems of the participants



## LOCATIONS WORLDWIDE

### MINITEC GMBH & CO. KG (GERMANY)

MiniTec Allee 1 | 66901 Schönenberg-Kübelberg  
Tel. +49 6373 81270 | Fax +49 6373 812720  
info@minitec.de | www.minitec.de

### MINITEC GMBH & CO. KG (GERMANY)

Nickelsweiher 6 | 66914 Waldmohr  
Tel. +49 6373 81270 | Fax +49 6373 812720  
info@minitec.de | www.minitec.de

### MINITEC GMBH & CO. KG (GERMANY)

Fürther Straße 33 | 90513 Zirndorf  
Tel. +49 911 2789000 | Fax +49 911 27890099  
zirndorf@minitec.de | www.minitec.de

### MINITEC SMART SOLUTIONS GMBH (GERMANY)

Zollamtstraße 7 | 67663 Kaiserslautern  
Tel. +49 6373 8127 350 | Fax +49 6373 812720  
kontakt@mss-digital.de | www.minitec-smart-solutions.net

### MINITEC BERLIN GMBH (GERMANY)

Volmerstraße 13 | 12489 Berlin  
Tel. +49 30 63926305 | Fax +49 30 63926306  
berlin@minitec.de | www.minitec.de

### MINITEC ESPAÑA S.L.U. (ESPAÑA)

C/ Carlos Jiménez Díaz, 7. Pol. Ind. La Garena  
28806 Alcalá de Henares, Madrid  
Tel. +34 916 562 652  
info@minitec.es | www.minitec.es

### MINITEC S.N.C. (FRANCE)

2, rue Charles Desgranges | 57214 Sarreguemines  
Tel. +33 387 276870 | Fax +33 387 276877  
info@minitec.fr | www.minitec.fr

### MINITEC.AT GMBH (AUSTRIA)

Beethovenstraße 12 | 2380 Perchtoldsdorf  
Tel. +43 1 8659559  
office@minitec.at | www.minitec.at

### MINITEC 4NAG (SWITZERLAND)

Honeywell-Platz 1 | 8157 Dielsdorf  
Tel. +41 44 5751500 | Fax +41 44 5751501  
info@minitec.ch | www.minitec.ch

### MINITEC SOLUTIONS SRL ROMÂNIA (ROMÂNIA)

Str. I.H. Pestalozzi Nr. 22 | Timisoara 300115  
Tel. +40 722 229 134  
office@minitec.ro | www.minitec.ro

### MINITEC D.O.O. (SLOVENIJA)

Teharska cesta 41 | 3000 Celje  
Tel. +386 59 071 390 | Fax +386 59 071 399  
info@minitec.si | www.minitec.si

### MINITEC SLOVAKIA S.R.O. (SLOVENSKO)

Rabčická 332 | 029 44 Rabča  
Tel. +421 43 5524350 | Fax +421 43 5524352  
info@minitec-slovakia.sk | www.minitec-slovakia.sk

### MINITEC HELLAS S.A. (GREECE)

Ag. I. Theologou 115 | 13672 Acharnes, Athen  
Tel. +30 210 2401444  
info@minitechellas.gr | www.minitechellas.gr

### MINITEC UK LTD. (UNITED KINGDOM)

Unit 1A & 1B Telford Road | Houndmills Industrial Estate  
Basingstoke, Hampshire RG21 6YU  
Tel. +44 1256 365 605  
info@minitec.co.uk | www.minitec.co.uk

### MINITEC FRAMING SYSTEMS LLC (USA)

5602 County Road 41 | 14425 Farmington, NY  
Tel. +1 585 9244690 | Fax +1 585 9244821  
sales@minitecframing.com | www.minitecframing.com

### MINITEC AUTOMATION TECHNOLOGY (USA)

7214 Gateway Park drive | Clarkston, Michigan 48346  
Tel. +1 248 620 1820 | Fax +1 248 620 0850  
sales@minitecautomation.com | www.minitecautomation.com

### MINITEC SYSTEM TECHNOLOGY CO. LTD. (PR CHINA)

Plant No. 10; No. 103 ChengMenJin Road | Taicang 215400  
Tel. +86 512 5320 8880 | Fax +86 512 5320 8879  
info@minitec.com.cn | www.minitec.com.cn

### MINITEC SA (SOUTH AFRICA)

48 York Road, North End | Port Elizabeth 6000  
Tel. +27 41 3914795  
info@minitec.co.za | www.minitec.co.za



### MiniTec-Partner weltweit

Australia | Austria | Belgium | Bosnia and Herzegovina | Brazil | Bulgaria | Canada | China | Croatia  
Czech Republic | Estonia | Finland | France | Greece | Hungary | India | Italy | Latvia | Liechtenstein  
Lithuania | Luxembourg | Macedonia | Malaysia | Mexico | Montenegro | Netherlands | New Zealand  
Poland | Portugal | Romania | Russia | Serbia | Singapore | Slovakia | Slovenia | South Africa | Spain  
Sweden | Switzerland | Turkey | Ukraine | United Kingdom | USA | Vietnam